

Connector AM-TOP®

Part no. 6

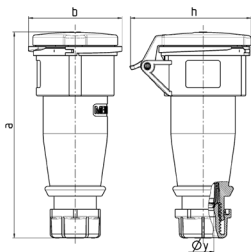


- screw terminals
- single part body
- cable gland and sealing
- strain relief and protection against kinking

Technical specifications

| | |
|---------------------------|---------------------------|
| Ampere | 32 A |
| Poles | 5 p |
| Voltage | 400 V |
| Clock position | 6 h |
| Hertz | 50-60 Hz |
| Connection technology | Screw terminals |
| Contact | standard |
| Protection type | IP 44 |
| Weight | 380 g |
| Declaration of Conformity | DE, VDE, AT, ÖVE, CN, CQC |

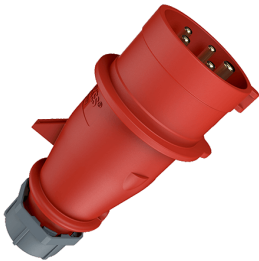
Drawing



| Drawing 3 MB 63 | Amp. Poles | 16 | | | 32 | | |
|--------------------------------------|---------------|------|------|------|-----|-----|-----|
| | | 3 | 4 | 5 | 3 | 4 | 5 |
| Dim. in mm | a | 162 | 165 | 167 | 209 | 209 | 208 |
| | b | 60 | 68 | 76 | 82 | 82 | 89 |
| | h | 83 | 92 | 98 | 100 | 100 | 108 |
| | y | 14.5 | 16 | 16 | 22 | 22 | 22 |
| Terminal for cond. cross | | 1 | 1 | 1 | 2.5 | 2.5 | 2.5 |
| section (mm ²) min.-max. | | -2.5 | -2.5 | -2.5 | -6 | -6 | -6 |

Plug AM-TOP®

Part no. 4

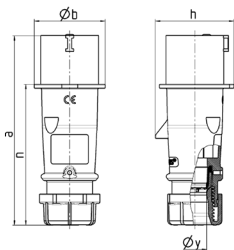


- screw terminals
- single part body
- cable gland and sealing
- strain relief and protection against kinking

Technical specifications

| | |
|---------------------------|---------------------------------|
| Ampere | 32 A |
| Poles | 5 p |
| Voltage | 400 V |
| Clock position | 6 h |
| Hertz | 50-60 Hz |
| Connection technology | Screw terminals |
| Contact | standard |
| Protection type | IP 44 |
| Weight | 280 g |
| Declaration of Conformity | DE,VDE, NL,Kema, AT,ÖVE, CN,CQC |

Drawing



| Drawing 2 MB 217 | Amp. Poles | 16 | | | 32 | | |
|---------------------|--------------------------------------|-------|-------|-------|-----|-----|------|
| | | 3 | 4 | 5 | 3 | 4 | 5 |
| Dim. in mm | a | 142 | 147 | 147 | 186 | 186 | 180 |
| | b | 53 | 59 | 67 | 70 | 70 | 77 |
| | h | 59 | 69.4 | 76 | 81 | 81 | 89.5 |
| | n | 105.2 | 110.5 | 110.5 | 141 | 141 | 135 |
| | y | 14.5 | 16 | 16 | 22 | 22 | 22 |
| | Terminal for cond. cross | 1 | 1 | 1 | 2.5 | 2.5 | 2.5 |
| | section (mm ²) min.-max. | -2.5 | -2.5 | -2.5 | -6 | -6 | -6 |