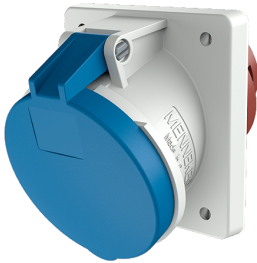


## Panel mounted receptacle

Part no. 1147A

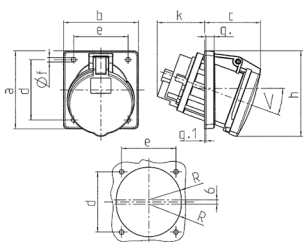


- screw terminals
- X-CONTACT®
- 20° inclination
- products with pilot contact on request

## Technical specifications

Ampere	63 A
Poles	3 p
Voltage	230 V
Clock position	6 h
Hertz	50-60 Hz
Connection technology	Screw terminals
Contact	highly heat resistant contact carrier, X-CONTACT®
Protection type	IP 44
Flange	110x106 mm
Fixing hole	85x77 mm
Inclination	20 °
Weight	526 g
Declaration of Conformity	DE, VDE, CN, CQC

## Drawing










Drawing 1 MB 297	Amp. Poles	63		
		3	4	5
Dim. in mm	a	110	110	110
	b	106	106	106
	c	82	82	82
	d	85	85	85
	e	77	77	77
	f	6.5	6.5	6.5
	g	12	12	12
	g.1	2	2	2
	h	122	122	122
	k	69	69	69
	R	46	46	46
	α	20°	20°	20°
Terminal for cond. cross section (mm <sup>2</sup> ) min.-max.		6 6 6	6 6 6	6 6 6
		-25 -25 -25	-25 -25 -25	-25 -25 -25

# MENNEKES CEE plugs and connectors PowerTOP plus for use under harsh conditions

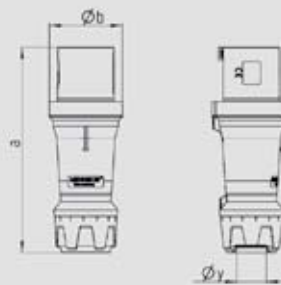
with highly heat-resistant contact carrier and nickel-plated contacts

to DIN VDE 0623, EN 60309-2, colour: grey and/or colour code. Enclosure and insert made of **AMAPLAST**. Other voltages and frequencies available on request.

  			Ampere	Poles	110V	230V	400V	500V						
					50 a. 60Hz	50 a. 60Hz	50 a. 60Hz	50 a. 60Hz						
			3p 4h	4p 4h	5p 4h	3p 6h	4p 9h	5p 9h	3p 9h	4p 6h	5p 6h	3p 7h	4p 7h	5p 7h
 <p><b>Plug PowerTOP plus</b></p> <p>⚠ IP 44 Product group 2219, type 3258 shown</p>	63	3												
	63	4												
	63	5												
 <p><b>Plug PowerTOP plus</b></p> <p>⚡ IP 67 Product group 2220, type 3325 shown</p>	63	3												
	63	4												
	63	5												
	125	3												
	125	4												
 <p><b>Connector PowerTOP plus with SoftCONTACT</b></p> <p>⚠ IP 44 Product group 3219, type 3285 shown</p>	63	3												
	63	4												
	63	5												
 <p><b>Connector PowerTOP plus</b> 63A: with SoftCONTACT 125A: with TorsionSpringCONTACT</p> <p>⚠ IP 67 Product group 3220, type 3425 shown</p>	63	3												
	63	4												
	63	5												
	125	3												
	125	4												

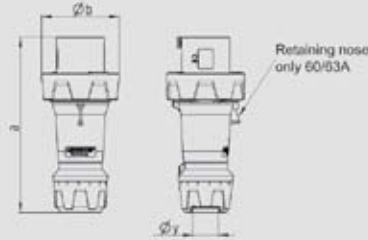
\*Until the PowerTOP plus are available for 125A, the reliable PowerTOP plugs and connectors are delivered with external strain relief.

**Highly heat-resistant contact carrier, frame terminals, nickel-plated contacts,** cable gland with integrated strain relief, seal and protection against kinking, enclosure with thread lock, two safety slides



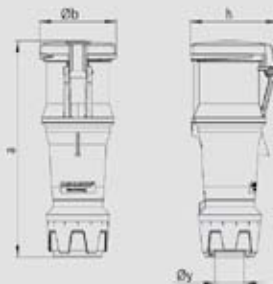
Drawing	Amp. Poles	63		
		3	4	5
2 MB 228				
Dim. in mm	a	250	250	250
	Øb	90	90	90
	Øy [max]	36	36	36
Terminal for cond. cross section (mm <sup>2</sup> ) min.-max.		6 - 16	6 - 16	6 - 16

**Highly heat-resistant contact carrier, frame terminals, nickel-plated contacts,** cable gland with integrated strain relief, seal and protection against kinking, enclosure with thread lock, two safety slides



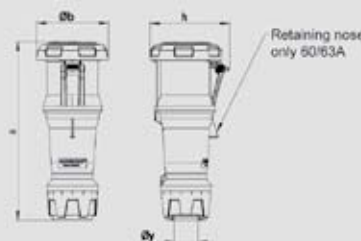
Drawing	Amp. Poles	63			125		
		3	4	5	3	4	5
2 MB 227							
Dim. in mm	a	250	250	250	290	290	290
	Øb	111	111	111	128	128	128
	Øy [max]	36	36	36	49	49	49
Terminal for cond. cross section (mm <sup>2</sup> ) min.-max.		6 - 16	6 - 16	6 - 16	25 - 50	25 - 50	25 - 50

**Highly heat-resistant contact carrier, frame terminals,** cable gland with integrated strain relief, seal and protection against kinking, enclosure with thread lock, two safety slides



Drawing	Amp. Poles	63		
		3	4	5
3 MB 71				
Dim. in mm	a	268	268	268
	Øb	95	95	95
	h	109	109	109
	Øy [max]	36	36	36
Terminal for cond. cross section (mm <sup>2</sup> ) min.-max.		6 - 16	6 - 16	6 - 16

**Highly heat-resistant contact carrier, frame terminals,** cable gland with integrated strain relief, seal and protection against kinking, enclosure with thread lock, two safety slides



Drawing	Amp. Poles	63			125		
		3	4	5	3	4	5
3 MB 70							
Dim. in mm	a	270	270	270	310	310	310
	Øb	109	109	109	121	121	121
	h	121	121	121	133	133	133
	Øy [max]	36	36	36	49	49	49
Terminal for cond. cross section (mm <sup>2</sup> ) min.-max.		6 - 16	6 - 16	6 - 16	25 - 50	25 - 50	25 - 50